

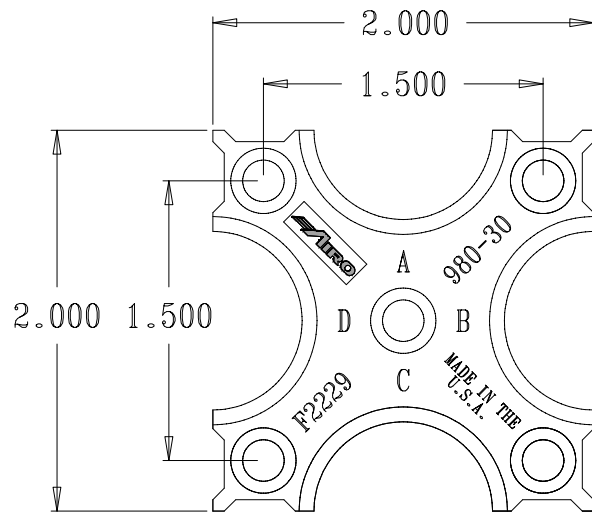
STANDARD STRIKER PLATE MATERIAL:
A2 TOOL STEEL

STANDARD HEAT TREAT SPEC.
59/60 RC SCALE

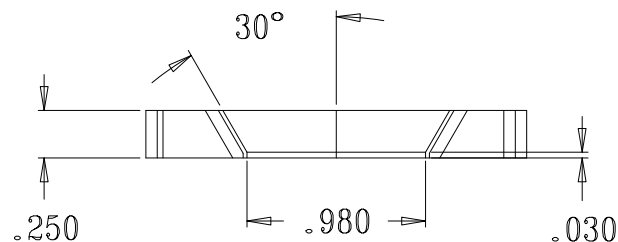


PHONE # 815-547-7588
FAX # 815-547-7588
WWW.AIROTOOL.COM

STRIKER PLATE PART NUMBER KEY



****EXAMPLE****



EXAMPLE: F2229-980-30

F = PREFIX SHOWING THAT THE STRIKER REQUIRES PINCH RELIEF (S = NO PINCH RELIEF REQUIRED)

22 = REFERS TO THE SIZE OF THE STRIKER. (IN THIS CASE 2" SQ.)

OTHER COMMON PREFIXES ARE:

15 = 1.50" SQ. 25 = 2.50" SQ. 35 = 3.50" SQ.
24 = 2.25" SQ. 33 = 3.00" SQ. 44 = 4.00" SQ.

29 = REFERS TO A SERIES OF NUMBERS IN OUR CATALOG THAT CORRESPOND TO DIFFERENT HOLE PATTERNS

980 = SIZE OF THE I.D. (E DIM.)

30 = STANDS FOR THE LAND (S DIM.)

SUFFIXES THAT FOLLOW THE LAND:

EP = EXTENDED PINCH

D = D2 MATERIAL

MP = MILLED PINCH

THE ANGLE OF THE I.D. IF IT IS SOMETHING OTHER THAN 30°

DAN

09/27/05